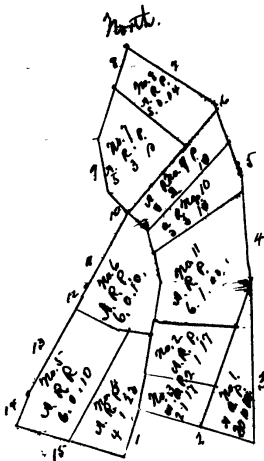
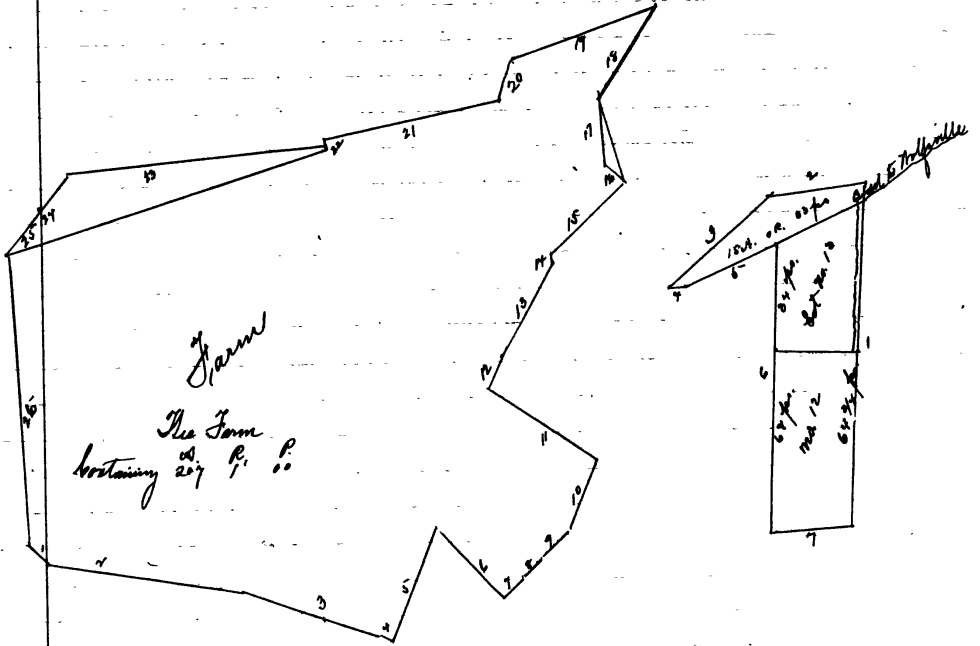


No. 7326. Equity

Estate of Ludwick ROUTZAHN



No. 7306 Equity.

bourses and distances of Timber Land or the outlines courses and distances.
 Beginning for the same at the end of 30 perches on the 10th line of the whole tract
 as owned by Ludwick Rautzahn late of Frederick County deceased at a stone pile and
 running thence N 24° E - 17 1/2 Perches to a stone planted S 72-43 Perches to intersect the 6th
 line of aforesaid tract called Recurvey on Nagaweth at the end of 6 1/2 Ps. thence North
 57 Perches to a stone planted on the West side of the Public Road from Ellerton to Mid-
 dlepoint thence N 1/2 East 42 ps. to a stone planted N. 16° N. 28.92 Ps. to a stone
 N 55° N. 11.28 Ps. to stone it being the Reg. of Lot No. 2 sold by Josiah Hays Ex of Rev. Hays
 deceased and running thence N. 57° N. 3 Ps. to pile of stone and then leaving the aforesaid
 outlines and running between Farm & Timber land S 17° N. 36 ps. past oak tree to post of fence
 thence S 18° E. 29.53 Ps. to Chestnut Tree marked S 51° E. 11.12 Ps. S 47° N. 36 ps. S 6. N. 2.40 Ps S 29
 N. 40 Ps S 17 1/2° N. 12 Ps. S 78° E. 48.68 Ps to the place of beginning containing 50 Acres 3 rods & 12
 S. Perches more or less.

Courses and distances for the farm.

Beginning for the same at the end of the 2nd line of a tract called "Harmon Plains"
 at the end of which line is a stone planted near a White Oak tree which stone and tree
 are about two perches from the middle and on the west side of what is called the New
 cut Road leading from Frederick to Hagerstown and running thence S. 48° E. 10 ps. perches
 to the South East side of said Road thence S. 80° East 7 1/2 perches to a stone planted
 about 2 perches westward from a small branch of water thence S. 73° E. 57 Perches to beg-
 of Deed from E. Rautzahn & wife to Ludwick Rautzahn for 278 acres of land more or less
 and running thence with said Deed 3 courses and distances namely South 78° E. 40 ps.
 & N. 24° E. 42.40 Perches S 41° E. 37.60 Perches N. 43 1/2° N. 10 Perches thence on the old divisional
 line between Jacob & Elias Rautzahn thence N. 42° - 10 perches to intersect at the end
 of 26 1/2 Ps. the 11th line of a tract of land called Recurvey on Nagaweth being the the 28th line
 of the land of "Promise" thence N. 45 1/2° E. 10 ps. N. 24° E. 30 perches to a pile of stones on
 said divisional line between Jacob & Elias Rautzahn and running with the 7000
 made courses & distances with the timber land namely 8 courses & distances N.
 78°: N. 48.68 Ps. N. 17 1/2° E. 12 ps. N. 31° E. 40 ps N. 67° E. - 3.40 Ps. N 47° E. - 36 Ps. N 50°
 N. 11.12 Ps to marked Chestnut Tree thence N. 18° N. 27.80 ps. N. 17° E. 36 ps. to the out-
 line as owned by Ludwick Rautzahn thence with said outlines S 52° N. 61 ps S 21°
 N. 15.25 Ps. to stone pile S 78 1/2° N. 38 Ps. by and with the Rear Lands to the Public Road
 S 11° E. 1.50 Ps. S 84° N. 95.12 Ps. to stone planted thence S. 55° N. 15 ps. S. 53° N. 14.44 Ps.
 to Public Road thence with said Public Road and with the Lands of D. Lasterman
 S 6° E. 109 Ps. to beginning containing 207 1/2 Acres of land more or less.

Filed, January 21, 1902,

Order nisi on Sales.

Order nisi on Sales

Jacob L. Rautzahn et al
 (Plaintiff)
 Ethel Raymer & Florence Raymer
 Defendants.

No. 7306 Equity,
 In the Circuit Court for Frederick County
 sitting in Equity.
 January Term 1902.