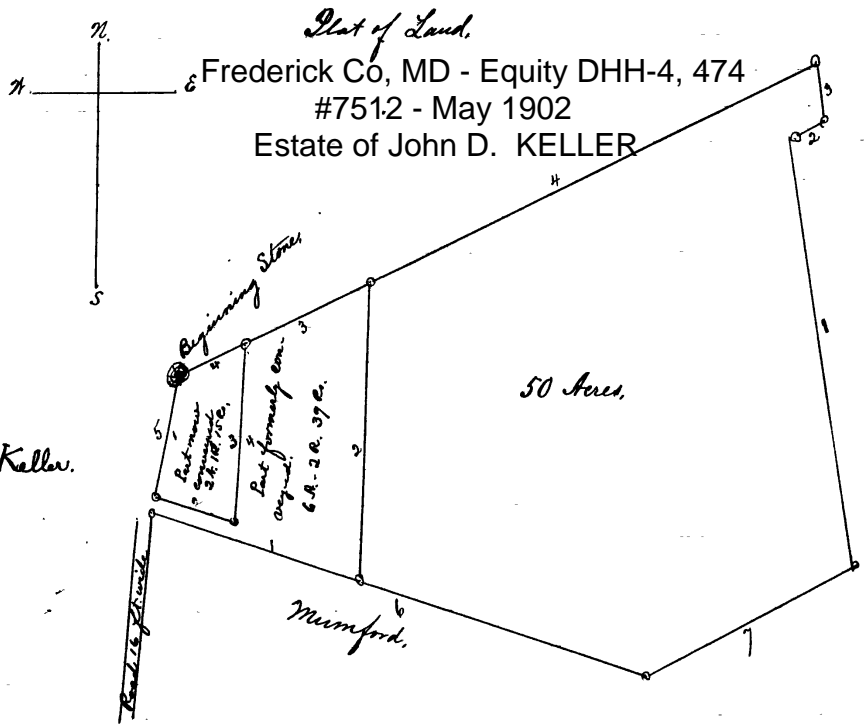


"Exhibit C."



Plot of Land,
 Frederick Co, MD - Equity DHH-4, 474
 #7512 - May 1902
 Estate of John D. KELLER

Keller.

50 Acres.

Mumford.

- Courses & Distances
1. S 12 N - 23 $\frac{25}{100}$ po.
 2. S 70 E - 15 $\frac{25}{100}$ "
 3. N 4 E - 33 $\frac{55}{100}$ "
 4. S. 65 N - 13 $\frac{75}{100}$ "

Scale 20 equal parts
 May 21, 1902.

Courses and Distances.

The part hereby intended to be conveyed is a part of a certain 9 Acres part of "Fielders Manor" as was conveyed by Henry Nindorff and wife to William Kibeter Sr. by deed recorded in Liber J.S. No. 38 Folio 33 one of the land records of Frederick County.

Said part being conveyed unto John D. Keller by deed executed by Ann C. Keller et al. The said 9 acres tract being part of a 50 acres parcel conveyed to Henry Nindorff by Jas. Hughes. (Concealer).

Beginning for the part hereby intended to be conveyed at a large stone formerly planted it being the beginning of aforesaid 9 acres parcel and the end of 4th line 50 Acres parcel conveyed as aforesaid and running thence connecting for variations

No. 7512 Equity.

courses and
distances

with the 10th line of said 9 acres part (1) S 12 N. $23\frac{15}{100}$ ps to the end of the 5th line of that part of aforesaid 9 acres part that was formerly conveyed to S. W. Hargrett. by Mary E. Keller et al by deed dated August 24th 1900 and running thence with said 5th line reversed (2) S. 70 E $15\frac{1}{4}$ ps. thence (3) N. 4 E $03\frac{52}{100}$ ps. to the end of 2nd line of conveyance last mentioned the same point being near a large chestnut tree at the end 26 ps. on the 4th line of aforesaid 9 acres. Thence with said line (4) S 65 N. $-13\frac{52}{100}$ ps. to the first mentioned beginning containing 2 acres, & Road 15 Sq. ps of land more or less.