

No. 6940 Equity,

Estate of John W. RAMSBURG

Courses & Distances,

State of Maryland, Frederick County, to-wit:-

I hereby certify that at the request made under the direction of Josiah Dault, Daniel Miller, N. Sampson Sturge, George H. Snow and John S. Lakin Commissioners appointed by the Circuit Court for Frederick County, sitting Equity in the case No. 6940 Equity on the docket of said Court, I did carefully survey the real estate lying in Frederick County, Maryland, of which John W. Ramsburg died seized and possessed -

The courses and distances of which with a plot of the same are herewith annexed, and I further certify that at the request made under the direction of the Commissioners aforesaid appointed in said Equity case, I did also survey and laid out the widow's dower in said land as laid off by said Commissioners the courses and distances of said widow's dower with a plot of the same are also herewith returned to-wit:-

Widow's Dower (Figure 1) it being part of Ramsburg's Content Content of which John W. Ramsburg died seized and possessed, - Beginning for the same at a stone at the beginning of the whole tract and running January 11, 1899 with the outlines thereof course and distances to-wit:- 1st S 37 $\frac{1}{2}$ ° E 15 $\frac{1}{2}$ po. 2nd S 30° W 19 $\frac{1}{2}$ po. 3rd S 19 $\frac{1}{2}$ ° W 41 $\frac{1}{2}$ po. 4th S 85 $\frac{3}{4}$ ° E 77 $\frac{1}{2}$ po. 5th N 30 $\frac{1}{2}$ ° E 4 po. 6th S 87 $\frac{1}{2}$ ° E 22 po. 7th S 39 $\frac{1}{2}$ ° E 4 po., to the Public Road, then with said Road 8th N 20° E 13 $\frac{1}{2}$ po. to a stone formerly planted, 9th N 41 $\frac{1}{2}$ ° E 8 po. 10th N 53 $\frac{1}{2}$ ° E 13 po. 11th S 70 $\frac{1}{2}$ ° E 19 $\frac{3}{4}$ po. 12th S 77 $\frac{1}{2}$ ° E 60 $\frac{1}{2}$ po. to a stone now planted on said Public road then leaving the said line and running the divisional line now made and located by the aforesaid Commissioners 13th N 14 $\frac{1}{2}$ ° W 25 $\frac{1}{2}$ po. to a stake 14th S 30° W 38 $\frac{1}{2}$ po. to a stake 15th S 39 $\frac{3}{4}$ ° W 18 po. to a stake 16th S 43 $\frac{1}{2}$ ° E 51 $\frac{3}{4}$ po. to the end of the 15th line of the whole tract, then with the outlines thereof 17th S 68 $\frac{1}{2}$ ° W 67 $\frac{1}{2}$ po. to a stone 18th S 36 $\frac{1}{2}$ ° W 127 po. to the beginning containing 102 $\frac{3}{4}$ Acres and 16 sq. po. of land.

Figure 5,

Courses and Distances of that part of "Ramsburg's Content" not included in the widow's Dower, of which John W. Ramsburg, died seized and possessed to-wit:- Beginning at B. (Figure 1) for the same at the end of the 15th line of the whole tract and running January 8, 1899 with it, (reversed) 7 courses and distances, to-wit:- 1st S 13 $\frac{1}{2}$ ° E, 60 $\frac{1}{100}$ po. 2nd S 75 $\frac{3}{8}$ ° E 27 $\frac{3}{4}$ po. to the middle of the Public road, then with said Public road 3rd S 20 $\frac{1}{4}$ ° W 12 po. 4th S 41 $\frac{3}{4}$ ° W 21 $\frac{1}{2}$ po. 5th S 31 $\frac{3}{8}$ ° W 13 $\frac{1}{2}$ po. 6th S 67 $\frac{3}{8}$ ° W 8 po. 7th S 79 $\frac{3}{4}$ ° W 5 $\frac{3}{4}$ po. to a stone now planted then by and with the divisional line now made 8th S 14 $\frac{1}{2}$ ° W 25 $\frac{1}{2}$ po. to a stake 9th N 30° W 38 $\frac{3}{8}$ po. to a stake, 10th S 39 $\frac{3}{4}$ ° W 18 po. to a stake 11th N 43 $\frac{1}{2}$ ° E 51 $\frac{3}{4}$ po. to the beginning containing 20 $\frac{3}{4}$ Acres and 18 sq. po. of land.

Courses and Distances of the John Feaster Farm of which John W. Ramsburg died seized and possessed to-wit: (Figure 2) Beginning at a large stone, the original beginning and running thence this 30th day of December 1898 1st S 69° W 36 po. to a stone 2nd S 58° W 12 po. to a stone 3rd S 80° W 34 $\frac{1}{2}$ po. ending in the middle of the public road, 4th S 54° W 8 $\frac{1}{2}$ po. to a stone, 5th N 61° W 10 po. to a stake, 6th S 36° W 21 po. to a stake, 7th S 51 $\frac{3}{4}$ ° W 26 $\frac{1}{2}$ po. to a stone, 8th N 62° W 62 $\frac{1}{2}$ po. to the Jefferson Road and with it 9th N 13 $\frac{3}{4}$ ° E 37 po., 10th N 41 $\frac{1}{2}$ ° W 57 $\frac{1}{2}$ po. to a stone, 11th N 87 $\frac{1}{2}$ ° E 1 $\frac{1}{2}$ po. to a stone 12th N 65 $\frac{1}{2}$ ° E 133 $\frac{3}{4}$ po. 13th S 78 $\frac{3}{4}$ ° E 23 $\frac{1}{2}$ po. to a stone 14th S 78 $\frac{3}{4}$ ° E 1 $\frac{1}{2}$ po.

No. 6940 Equity.

courses & distances

thence 15th S 10° E 201 ps to a stone and stake, 16th S 79° W 3 ps to a stake and stone 17th S 2° W. 6 7/10 ps to the Beginning, containing 177 1/2 acres and 22 sq. ps. of land (as surveyed and calculated by R. S. Ragler.)

Courses and Distances of a Lot South of Middleton of which John W. Ransburg died seized and possessed to wit: - (Figure 3)

Beginning for the same at the North East corner of said Lot and in the middle of the Jefferson Public Road and running thence (January 12, 1899) with said Road 1st S 6° E 36 1/2 ps then 2nd S 75 3/4° W. 25 1/100 ps. to the Putnamville Public Road and with it 3rd S 13 1/2° E 32 35/100 ps. then 4th S 80 1/2° E 13 7/10 ps. to the Beginning;

Containing 4 acres and 4 1/4 sq. ps. of land.

Courses and distances of Town Lot on which the Kaitz Hotel of Middleton is situated of which John W. Ransburg died seized and possessed,

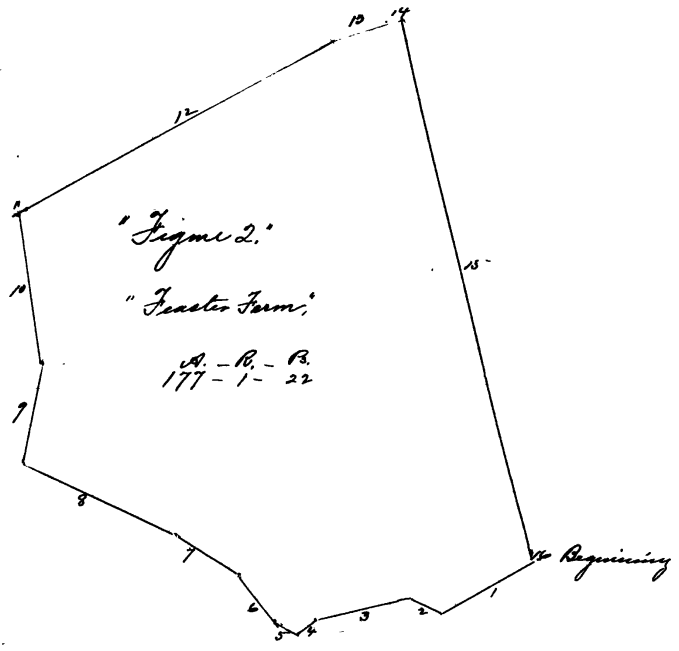
Figure 4.

Beginning for the same at the North East corner of said Lot and running thence 1st S 82 3/4° W 14 1/2 ps. 2nd S 7 1/2° W 7 7/10 ps. 3rd S 82 3/4° E 14 7/10 ps. 4th S 7 1/2° E 7 7/10 ps. to the beginning.

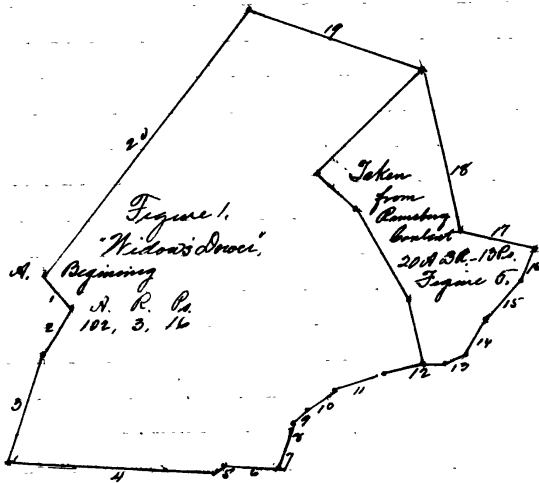
Containing 1/2 acre and 32 1/2 sq. ps. of land.

January 14, 1899.

Edward Albaugh Co. Sur.



Plato vs.



Ratifying same
Mehris's work.

Olivia C. Ramsburg

John C. Milton, Executor. &c.

No. 6940 Equity
in the Circuit Court for Frederick County
sitting as a Court of Equity.

This cause standing ready for hearing upon the return of the Commissioners appointed to lay off and designate the dower of Olivia C. Ramsburg by a former decree passed in this cause and it appearing that a copy of the order passed in this cause and it appearing that a copy of the order passed in this cause on the 25th day of January, 1899 having been published in a newspaper published in Frederick County for one week prior to the fourth day of February, 1899, and a copy of said order served on the said Olivia C. Ramsburg, as appears by the printed certificate herewith filed and the sheriff's return in this cause filed.

It is thereupon this fourth day of February in the year Eighteen hundred and ninety nine by the Circuit Court for Frederick County, sitting as a Court of Equity, and by the authority thereof, adjudged, ordered and decreed that the return of the Commissioners appointed to lay off and designate the dower of Olivia C. Ramsburg in the Real Estate of John W. Ramsburg late of Frederick County, deceased, filed in this cause be, and the same is hereby finally ratified and confirmed but course to the contrary having been shown, and that the plaintiff, Olivia C. Ramsburg, hold in severalty, for and during the terms of her natural life, and as and for her dower in the real estate in these proceedings mentioned, all that part of the said real estate which is described and designated in the aforesaid return of the Commissioners and the plat accompanying as "Figure 1" containing one Hundred Two Acres, Three Rods and fifteen perches of land, more or less, and it is further ordered that the said Olivia C. Ramsburg pay the one third of the costs and expenses incurred in assigning and laying off said dower and that the estate of the said John W. Ramsburg from its funds pay the costs and expenses

Geo. M. Thayer

Filed February 4, 1899.