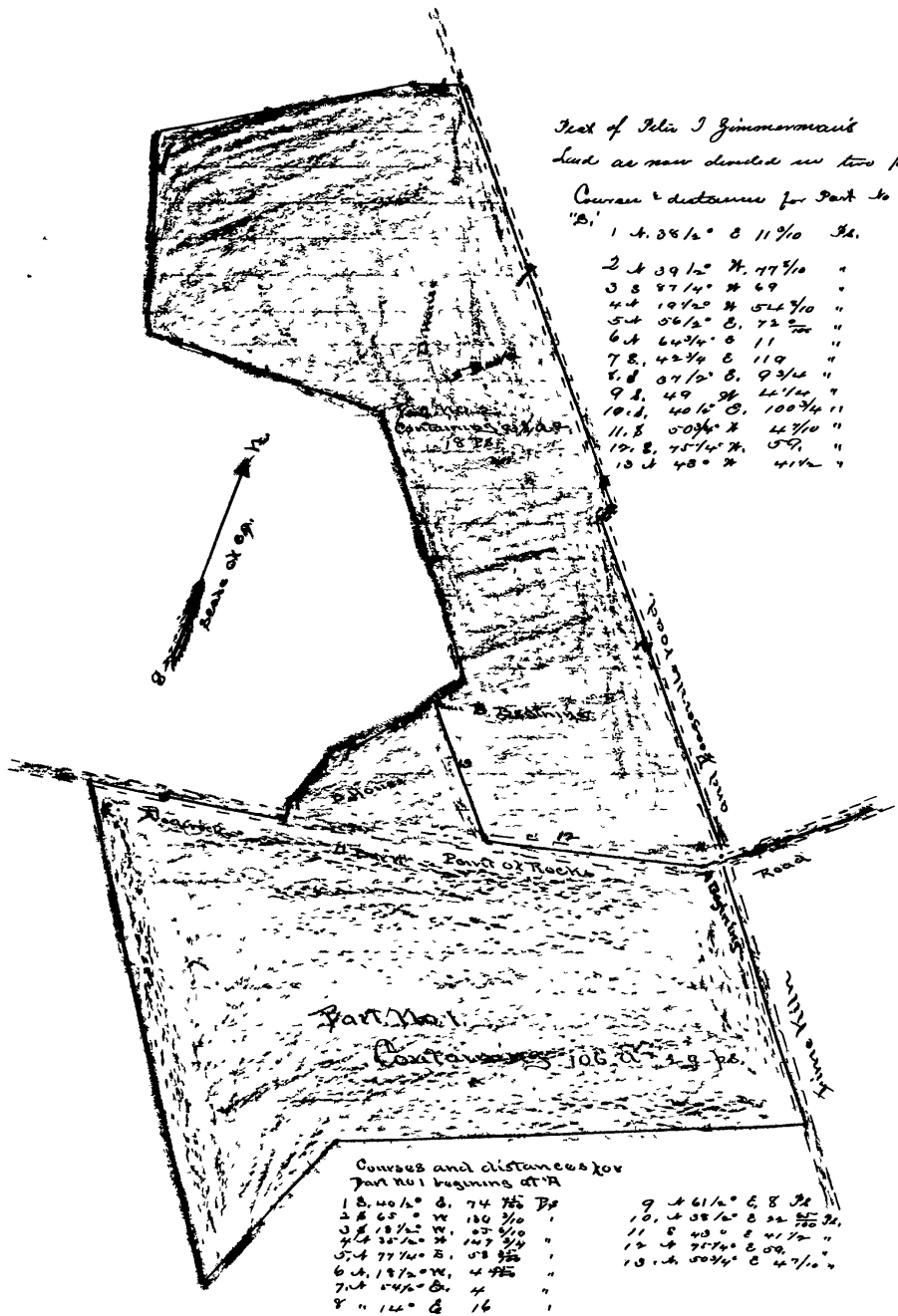


No. 7599. Equities
 Plat of Tow Farms,
 Exhibit B.



Part of Felix J Gimonon's
 land as now divided into two parts
 Courses & distances for Part No 2 beginning at
 "B"

1	4	38 1/2°	E	11 1/10	34.
2	4	39 1/2°	N	17 5/10	"
3	5	57 1/4°	N	69	"
4	4	19 1/2°	N	52 7/10	"
5	4	56 1/2°	E	72 5/10	"
6	4	64 3/4°	E	11	"
7	8	42 3/4°	E	119	"
8	8	37 1/2°	E	9 3/10	"
9	8	49	N	26 1/10	"
10	8	40 1/2°	E	100 3/4	7
11	8	50 3/4°	N	22 7/10	"
12	8	75 1/4°	N	50	"
13	8	48°	N	41 1/2	"

Courses and distances for
 Part No 1 beginning at "A"

1	8	40 1/2°	E	74 7/10	75
2	8	65°	N	130 3/10	"
3	8	18 1/2°	N	107 6/10	"
4	8	35 1/2°	N	147 3/4	"
5	4	77 1/4°	E	178 5/10	"
6	4	18 1/2°	N	4 7/10	"
7	4	54 1/2°	E	4	"
8	4	14°	E	16	"
9	4	61 1/2°	E	8	30
10	4	38 1/2°	E	22 7/10	34.
11	8	43°	E	41 1/10	"
12	4	75 1/4°	E	50	"
13	4	50 3/4°	E	42 1/10	"