

March 2^d 1855.

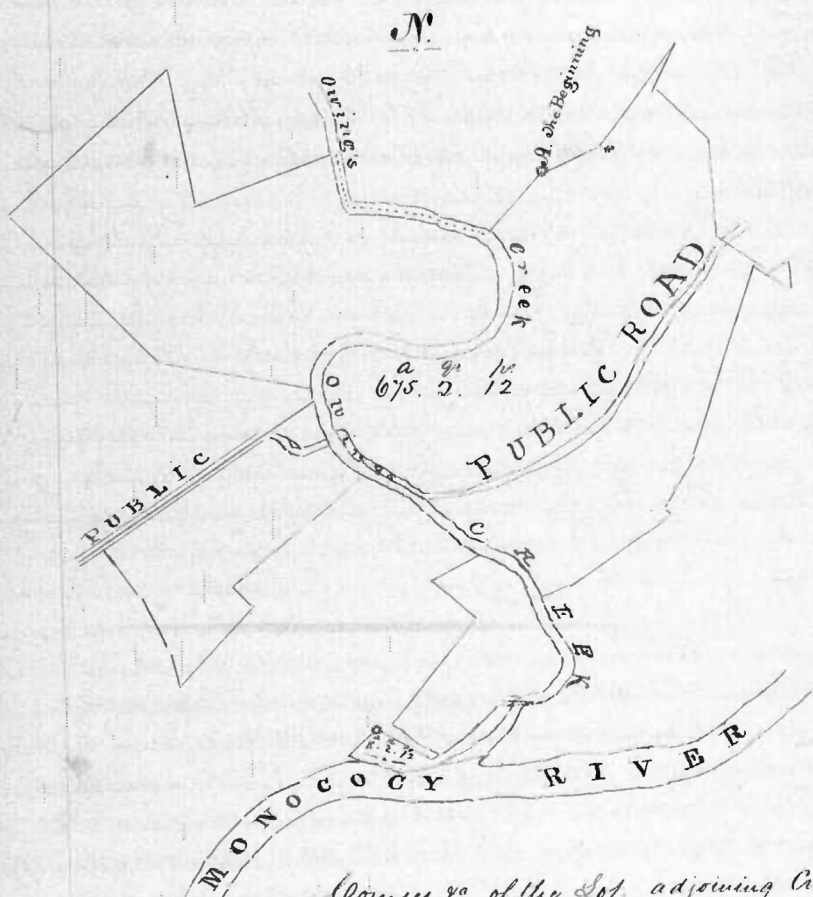
Just. Co.

Courses, Distances and Plats of the Real Estate of the late Joseph Eichelberger Courses &c. of the Home Property, being part of a Tract of Land called "Two Friends Shps." a Tract called "The Mistake is Rectified" and a tract called "Rushers Purchase" Beginning at a large stone formerly planted, and marked B^{Feb} 1799 standing at the end of the first line of a Tract "called" The Resurvey on Middle Ohio" it being the Beginning of the second part of the Deed from Martin Eichelberger, to Joseph Eichelberger, dated the third day of February, 1854 it being also the Beginning of the whole tract aforesaid "called" "The Mistake is Rectified" and running thence by and with the outer lines thereof Thence Courses, Correcting the same to agree with their original location S 40³/₄° W 55 ps to the North edge of Owings Creek, and up said Creek North seventy six & three quarters degrees, west twenty four perches, north seventy four & three quarters degrees, west thirty five perches, north eighty seven & a quarter degrees, west thirty two and a half ps, north fifteen and three quarters degrees, west fifty perches, then leaving the Creek North Eighty two & three quarters degrees, West seven perches South Sixty two five eighths degrees west twenty seven & a fifth hundredths perches, North Eleven & three quarters degrees, west twenty one & a half perches to a stone marked N. 6. South Forty six and three quarter degrees, West one Hundred & forty two perches, to a stone, South Forty five & a quarter degrees, East one Hundred and thirty eight and a half perches to a stone, South Eighty two & a half degrees, East one Hundred & eight perches, to the middle of Owings Creek, & down it S. thirty one degrees, East seven perches to the end of the 2^d line of the deed from John P. Fern Meeman Et^{al} to Joseph Eichelberger dated the 20^d August 1843, for 243. P. 28. & with the 2^d line of said Deed, Correcting the same S 52° W. 142 ps, ending in the middle of the Public Road, leading to Eichelbergers Mill, it being at the end of the 3^d line of the deed from George Wessel and wife, to Joseph Eichelberger, dated 9th -

December

1832. then by and with the out lines of said Deed 7 Courses, Correcting the same, and with the middle of the Public Road, and still with said Deed. S 36° E 41 1/4 ps. to a Stone at the root of a Red Oak tree. S 30° E 39 7/8 ps. to a Stone. S 13 1/2° E 23 7/8 ps. N 41 1/2° E 39 1/4 ps. to a Stone. N 44° W 17 1/4 ps. to a Stone, at the end of the 11th line of the whole tract aforesaid. "Called" The Mistake is Rectified, it being at the end of the 24th line of the Deed, from John P. Zimmerman Esq. to Joseph Eichelberger, then by & with said Deed, Correcting the same at 49 1/2° E 123 ps. to the Middle of Owings Creek & down said Creek, in the Middle thereof S 66° E 19 ps. S 55° E 21 ps. S 44° E 30 ps. S 61° E 19 ps. to intersect the 22nd line of the Tract, aforesaid "Called" Rushers Purchase S 62° W 43 1/2 ps. to a Stone. S 50 1/2° E 36 1/2 ps. S 78° W 3 ps. to a Stone, at the Beginning of the Deed aforesaid, from John P. Zimmerman to Joseph Eichelberger at being at the Beginning of the whole tract aforesaid, "Called" Rushers Purchase & running thence by and with the out lines of said tract, Correcting the same S 55 1/2° W 90 ps. to a Stone S 62° E 40 ps. to a Stone. N 55° E 28 ps. N 42° E 30 ps. N 55° E 24 ps. running up the Middle of Owings Creek, and ending in said Creek, then up by and with the Middle thereof to the end of the 10th line of the Tract aforesaid. "Called" "Rushers Purchase" as the same is now Corrected being in Owings Creek, then by and with the lines of said Tract, Correcting the same 6 Courses. S 55° E 2 ps. to a Stone, marked B, on the East side of said Creek, and on the south East side of a ford, then leaving said Creek, still with the tract aforesaid, Correcting the same N 61° E 21 1/2 ps. N 56° E 83 1/2 ps. to a Stone N 51° W 6 7/10 ps. to a Stone at the end of the 20th line of the second part of the Deed aforesaid from Martin Eichelberger to Joseph Eichelberger, and with said Deed, Correcting the same N 27 1/4° E 41 ps. to a Stone N 133° E 135 1/4 ps. to a Stone, marked XXII at the end of the 25th line of the Tract aforesaid. "Called" The Mistake is Rectified then by and with the out lines of said Tract, 9 Courses, Correcting the same S 58 1/4° E 34 1/4 ps. to a Stone. N 2 1/2° E 20 ps. to a Stone S 57° W 17 ps. to a Stone N 58 1/4° W 40 ps. N 5° W 70 ps. N 54° W 58 ps. N 30° E 36 1/2 ps. S 39 1/2° W 89 ps. to a Stone at the Root of a marked White Oak tree. S 69 1/2° W 40 ps. to the place of Beginning containing 67 1/2 A. 2 R. 12 ps. Also part of a Tract of Land Called "True Friendship" being the same Land, deeded by 1. Basil Wood, to Frederick Eichelberger, by Deed, dated 11th May 1822. Beginning at a Stone, formerly planted, at the end of the 34th line of "True Friendship" it being also the Beginning of 1 Basil Wood & wife parcel of Land, conveyed by Christian Rudy to James (Campbell) and running thence, Correcting the lines S 62° E 40 ps. to a Stone, on the south side of a Hickory stump N 58° E 7 1/2 ps. to a Stone, at the end of 35 1/2 ps. on the 2nd line of a tract Called "Rushers Purchase, and with said tract Correcting the same. S 62° E 4 1/2 ps. to a Stone at the end of said line. Still N 55° 28 ps. N 42° E 28 1/4 ps. to intersect 1 Basil Woods Land, at the end of 9 ps. on the 4th line thereof N 85° E 15 ps. to the end of said 4th line, then with the out lines thereof, Correcting the same S 29° W 26 ps. to a Stone Near the East margin of Owings Creek. S 67° W 48 ps. to a Stone on the North Bank of Monocacy. S 81° W 26 ps. to a Stone, at the corner edge of Monocacy, then with the 8th line of 1 Basil Woods Land, N 75 1/2° W 38 ps. to a Stone-planted, one yard from a white Oak tree, then N 48 1/2° E 22 1/4 ps. to the beginning containing 8 A. 3 R. 12 ps.

Plat of "The House Property."

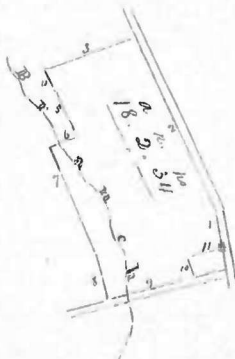


By a Scale of 80 ps.

Corners &c of the Lot, adjoining Creagerstown, being part of a tract of land called "Town Tract", or be it part of any other tract whatsoever. Beginning at the south east corner of Matthias Kolb's lot, and on the north side of the public road leading to Eichelburgers Mill, and running thence by and with the north side of said road $N 80^{\circ} E. 11 \frac{1}{4} \text{ pt}$ $N 67 \frac{1}{2}^{\circ} E. 64 \frac{75}{100} \text{ ps.}$ to the end of the 11th line of the 5th conveyed by George Beckenbaugh to Joseph Eichelburger by deed dated 28th October 1818, thence by & with said parcel reversed 3 corners, correcting the same, $N 15^{\circ} 50' W. 33 \text{ ps.}$ $S. 58 \frac{1}{4}^{\circ} W. 7 \text{ ps.}$ $S 66 \frac{1}{2}^{\circ} W. 18 \text{ ps.}$, then $N. 16 79 \frac{7}{10} \text{ ps.}$ $S 66 \frac{1}{2}^{\circ} W. 36 \frac{15}{100} \text{ ps.}$ to a stone, $S 77^{\circ} W. 17 \frac{1}{2} \text{ ps.}$ to the east side of Water Street thence by and with the east side thereof, $S 10 \frac{1}{2}^{\circ} E. 28 \frac{1}{4} \text{ ps.}$ to the north west corner of said Matthias Kolb's lot, thence with said lot $N 81^{\circ} E. 6 \frac{3}{4} \text{ pt.}$ $S. 10^{\circ} E. 12 \frac{1}{2} \text{ ps.}$ to the beginning. Containing $18. 2. 34$

Plat

N.



Scale of 110 ps.