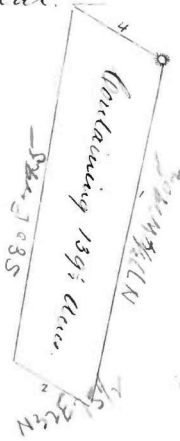


Courses &c. of the Mountain Land, part of the real estate of the late Joseph Eichelberger. The 1st Parcel being part of Lot N^o 8. part of "The Mountain Tract" being part of the land deceded by George Calvert to Frederick Eichelberger by deed dated the 2nd March 1798. Beginning at the end of the 3rd line of the deed aforesaid from George Calvert to Frederick Eichelberger, and running thence by and with said deed revised 2 courses correcting the same N. 77 $\frac{3}{4}$ ° W. 290 $\frac{1}{2}$ ft. to intersect the 78th line of "The Mountain Tract" and with said line revised correcting the same N 32° E. 75 $\frac{1}{2}$ ps. then S 80° E. 295 ft. to intersect the given line of the deed aforesaid then with it revised to the beginning, containing 139 $\frac{1}{2}$ Acres.

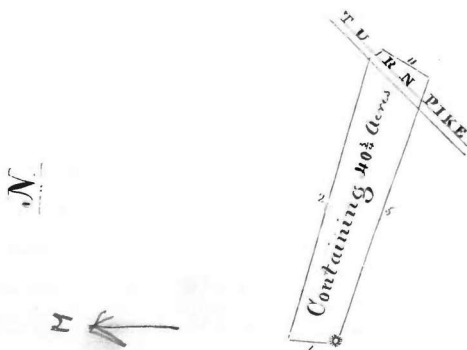
Plot.



By a scale of 100 ft

Courses &c. of the Mountain Land, part of the real estate of the late Joseph Eichelberger. The 2nd parcel being part of Lot N^o 10 part of "The Mountain Tract." Beginning at a stake at the end of the 6th line of Matthias Shroops part of Lot N^o 10 for 60 $\frac{1}{2}$ as surveyed 15th March 1810, and running thence with the outlines thereof revised 3 courses correcting the same, N 2 $\frac{1}{2}$ ° E. 28 $\frac{3}{8}$ ft. to a stake on the north side of a road about 3 feet west of a small black Oak S. 72° E. 194 to a stake at the Turnpike, S 31° E 8 $\frac{1}{2}$ ps. to a stake in a pond of water, then S 30 $\frac{1}{2}$ ° West 35 $\frac{1}{2}$ ps. to a stone on the closing line of the 60 acres aforesaid, then with said line revised to the beginning, containing 40 $\frac{3}{4}$ Acres.

Plot



Scale of 80 ft

Surveyed

pr. S. H. C. Neal
Surveyor Fredk Co.

March 2^o 1855.